

Product data sheet

Specifications



servo motor BSH, Lexium 32,
0.21N.m, 9000rpm, 40mm,
untapped shaft, 16 Sincos Multi
turn, with brake, IP50

BSH0401P07F2A

Product availability: Non-Stock - Not normally stocked in
distribution facility

Price*: 1,968.00 USD

Main

| | |
|---------------------------|---|
| Device short name | BSH |
| Product or Component Type | Servo motor |
| Maximum mechanical speed | 10000 rpm |
| Continuous stall torque | 1.86 lbf.in (0.21 N.m) LXM32.U60N4 1.5 A, 480 V, three phase 1.86 lbf.in (0.21 N.m) LXM32.U60N4 1.5 A, 400 V, three phase 1.86 lbf.in (0.21 N.m) LXM32.U45M2 1.5 A, 230 V, single phase |
| Peak stall torque | 7.08 lbf.in (0.8 N.m) LXM32.U60N4 1.5 A, 480 V, three phase 7.08 lbf.in (0.8 N.m) LXM32.U60N4 1.5 A, 400 V, three phase 7.08 lbf.in (0.8 N.m) LXM32.U45M2 1.5 A, 230 V, single phase |
| Nominal output power | 166 W LXM32.U60N4 1.5 A, 480 V, three phase 166 W LXM32.U60N4 1.5 A, 400 V, three phase 77 W LXM32.U45M2 1.5 A, 230 V, single phase |
| Nominal torque | 1.558 lbf.in (0.176 N.m) LXM32.U60N4 1.5 A, 480 V, three phase 1.558 lbf.in (0.176 N.m) LXM32.U60N4 1.5 A, 400 V, three phase 1.629 lbf.in (0.184 N.m) LXM32.U45M2 1.5 A, 230 V, single phase |
| Nominal speed | 9000 rpm LXM32.U60N4 1.5 A, 480 V, three phase 9000 rpm LXM32.U60N4 1.5 A, 400 V, three phase 4000 rpm LXM32.U45M2 1.5 A, 230 V, single phase |
| Shaft end | Smooth shaft |
| IP Degree of Protection | IP50 standard |
| Speed feedback resolution | 32768 points/turn x 4096 turns |
| Holding brake | With |
| Mounting Support | International standard flange |
| Electrical Connection | Rotatable right-angled connectors |

Complementary

| | |
|---------------------------|---|
| Range Compatibility | Lexium 32 |
| supply voltage max | 400 V |
| Phase | Three phase |
| Continuous stall current | 1.12 A |
| maximum continuous power | 220 W |
| Maximum current Irms | 4.7 A LXM32.U60N4 480 V 4.7 A LXM32.U60N4 400 V 4.7 A LXM32.U45M2 230 V |
| Maximum permanent current | 1.12 A |

Price is "List Price" and may be subject to a trade discount – check with your local distributor or retailer for actual price.

| | |
|---------------------------------------|---------------------------------------|
| Switching frequency | 8 kHz |
| Second shaft | Without second shaft end |
| Shaft diameter | 0.3 in (8 mm) |
| Shaft length | 1.0 in (25 mm) |
| Feedback type | Multiturn SinCos Hiperface |
| Holding torque | 3.5 lbf.in (0.4 N.m) holding brake |
| Motor flange size | 1.6 in (40 mm) |
| Number of motor stacks | 1 |
| Torque constant | 0.19 N.m/A 248.0000000000 °F (120 °C) |
| Back emf constant | 13.6 V/krpm 68.0000000000 °F (20 °C) |
| Number of motor poles | 10 |
| Rotor inertia | 0.04 kg.cm ² |
| Stator resistance | 17.2 Ohm 68.0000000000 °F (20 °C) |
| Stator inductance | 14.6 mH 68.0000000000 °F (20 °C) |
| Stator electrical time constant | 0.85 ms 68.0000000000 °F (20 °C) |
| Maximum axial force Fa | 0.2 x Fr |
| Brake pull-in power | 5.8 W |
| Type of cooling | Natural convection |
| Length | 3.9 in (99.4 mm) |
| Centring collar diameter | 1.2 in (30 mm) |
| Centring collar depth | 0.10 in (2.5 mm) |
| Number of mounting holes | 4 |
| Mounting holes diameter | 0.2 in (4.5 mm) |
| Circle diameter of the mounting holes | 1.8 in (46 mm) |
| Net Weight | 1.3 lb(US) (0.6 kg) |

Ordering and shipping details

| | |
|-------------------|---------------|
| Category | US1PC5318282 |
| Discount Schedule | PC53 |
| GTIN | 3606485467207 |
| Returnability | No |
| Country of origin | DE |

Packing Units

| | |
|------------------------------|-------------------|
| Unit Type of Package 1 | PCE |
| Number of Units in Package 1 | 1 |
| Package 1 Height | 4.3 in (11.0 cm) |
| Package 1 Width | 6.7 in (17.0 cm) |
| Package 1 Length | 9.4 in (24.0 cm) |
| Package 1 Weight | 22.1 oz (627.0 g) |

Sustainability

Green Premium™ label is Schneider Electric's commitment to delivering products with best-in-class environmental performance. Green Premium promises compliance with the latest regulations, transparency on environmental impacts, as well as circular and low-CO₂ products.

Guide to assessing product sustainability is a white paper that clarifies global eco-label standards and how to interpret environmental declarations.

[Learn more about Green Premium >](#)

[Guide to assess a product's sustainability >](#)



Transparency RoHS/REACH

Well-being performance

Mercury Free

Rohs Exemption Information Yes

Pvc Free

Certifications & Standards

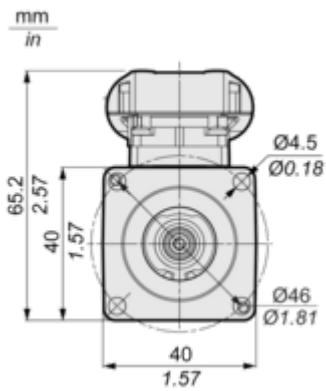
| | |
|---------------------------|--|
| Reach Regulation | REACH Declaration |
| Eu Rohs Directive | Pro-active compliance (Product out of EU RoHS legal scope) |
| China Rohs Regulation | China RoHS declaration |
| Environmental Disclosure | Product Environmental Profile |
| Weee | The product must be disposed on European Union markets following specific waste collection and never end up in rubbish bins. |
| Circularity Profile | No need of specific recycling operations |
| California Proposition 65 | "WARNING: This product can expose you to chemicals including: Lead and lead compounds, which is known to the State of California to cause cancer and birth defects or other reproductive harm. For more information go to www.P65Warnings.ca.gov " |

Dimensions Drawings

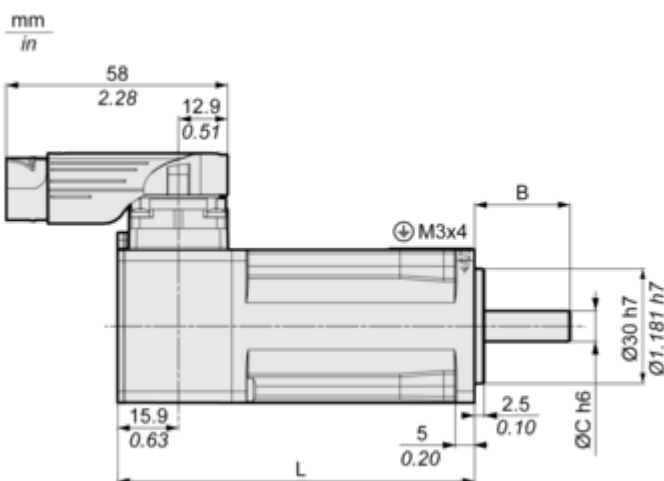
Servo Motors Dimensions

For Servo Motor with Brake

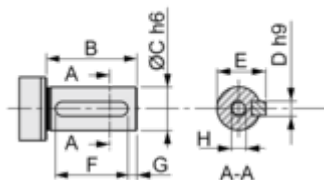
Front view



Left view



DIN 6885 A



| | Dimensions in mm | Dimensions in in. |
|---|------------------|-------------------|
| L | 99.4 | 3.91 |
| B | 25 | 0.98 |
| C | 8 | 0.31 |
| D | 3 | 0.12 |

| | Dimensions in mm | Dimensions in in. |
|----------|-------------------|-------------------|
| E | 9.2 | 0.36 |
| F | 12 | 0.47 |
| G | 4 | 0.16 |
| H | DIN 332 DS M3 x 9 | |
| A | DIN 6885-A3x3x12 | |